

PROGRESS LIGHTING  
DESIGN+SERIES™

JEFFREY ALAN MARKS  
POINT DUME™ COLLECTION





## JEFFREY ALAN MARKS


Recognized as one of today's most influential American designers, Jeffrey's work is infused with the same lighthearted, good-natured disposition as the Southern California talent himself. With a thoughtful and tailored sensibility, his designs are always an effortless blend of timelessness and casual livability, devoid of trend or artifice. From Nantucket Beach houses to San Francisco town houses, Jeffrey's work resonates.

PROGRESS LIGHTING  
DESIGN+SERIES™

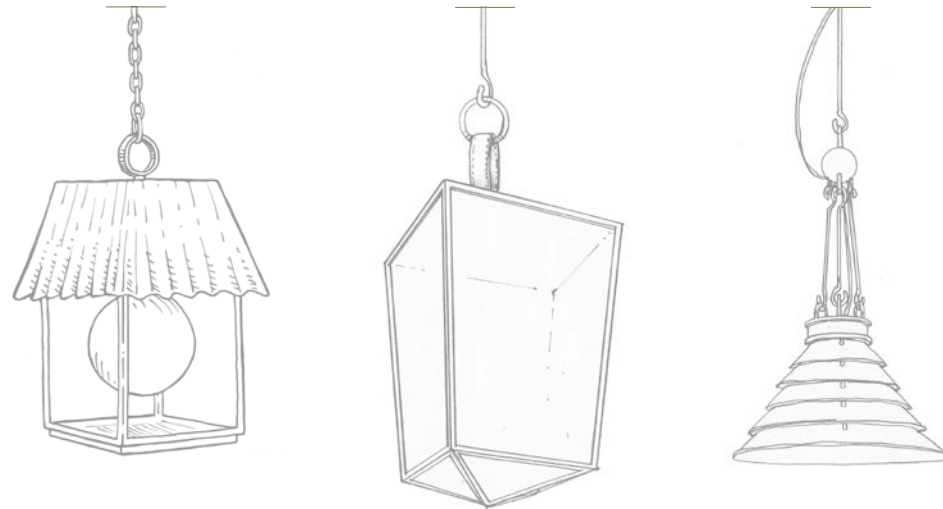


Featuring Point Dume™ Hook Pond Lanterns

Photo by Read McKendree



A fitting collaboration between  
dreamer and maker.



## DREAMER

Jeffrey's purposeful and authentic spaces beg to be lived in rather than existing only to be stylish. Today this Elle Décor A-List designer's spirited aesthetic is realized beyond his fortunate clients through licensing partnerships and a broader audience can look forward to homes that are more genuine, more personal and more engaging.

JEFFREY ALAN MARKS



Photo by Steven Lippman

INSPIRED BY

POINT DUME





Photo by Lisa Romerein

“I believe that lighting has a higher purpose, to be at once illuminating and decorative, purposeful and beautiful. Lighting is the ultimate marriage of form and function and the most transformative element in a design project. The very nature of light itself is inspirational.”

JEFFREY ALAN MARKS



Jeffrey's Point Dume™ lighting collection celebrates a curated mix of yesterday and today, distilling both industrial and artisanal influences. At home in a range of lifestyles from coastal to urban, the Collection is inspired by two of his favorite places, Point Dume, California, and East Hampton, New York, with exceptional

combinations of materials woven throughout. Emulating both the raw strength and the captivating honesty of the landscape, Jeffrey intuitively elevates lighting to a more authentic art form as he marries craftsmanship and style with some of his favorite materials and memories.





## MAKER

In the eclectic Point Dume™ Collection, the dreamer and the maker are united by the desire to provide an elevated level of home fashion to an enthusiastic design-savvy consumer. As the inaugural guest designer of Progress' Design Series brand, Jeffrey's design goals are in sync with the Design Series

philosophy — to offer sophisticated styling at an accessible price. Together they are on a journey to inspire individuals to update favorite spaces in their homes through interior and exterior fixtures that highlight artistic influence, rich finishes and fashion-forward elements.

POINT DUME™ COLLECTION



## Shadmore

With the Shadmore Pendant, Jeffrey embraces bold architectural influences to create a minimalistic design that effectively blurs the lines between indoor and outdoor living. Airy interconnected geometric cubes form a spacious frame giving the light a modern personality. An elegant, marbled acrylic shade creates a striking focal point while delivering an inviting, warm glow.



### OUTDOOR HANGING LANTERN

P550118-141  
Galvanized



### OUTDOOR HANGING LANTERN

P550118-31M  
Matte Black







## Edgecliff

The Edgecliff Pendant celebrates the austere simplicity and functionality of America's architecturally distinct corrugated metal-clad buildings. Crisp, sharp lines form a frame of iconic metal curves, making a sculptural gesture to its traditional inspiration. Silver mesh patterned glass on each end of the frame provides a luxurious touch to the rustic design. Jeffrey recommends using exposed filament style bulbs in the open-bottom frame to further the authentic Farmhouse style of the light.



### OUTDOOR HANGING LANTERN

P550119-108  
Oil Rubbed Bronze



### OUTDOOR HANGING LANTERN

P550119-192  
Shelter White



### OUTDOOR HANGING LANTERN

P550119-141  
Galvanized



## Seamoor

For Seamoor, Jeffrey created a sophisticated adaptation of the utilitarian metal roofs found on farm buildings throughout the countryside. A square frame supports a wavy roof inspired by traditional corrugated rooflines. The rectangular handle is reminiscent of handles on old barn lanterns, but its oversized scale adds a contemporary element. Clear glass panels surround a classic silver reflector on the back panel, enhancing the glow cast from an elegant double candle holder. Made with DURASHIELD, a durable material specially designed and tested to resist harsh environmental conditions.



### WALL LANTERN

P560297-108  
Oil Rubbed Bronze



### WALL LANTERN

P560297-141  
Galvanized



Photo by Read McKendree



Photo by Read McKendree



**OUTDOOR HANGING  
LANTERN**

P550117-141  
Galvanized



**OUTDOOR HANGING  
LANTERN**

P550117-108  
Oil Rubbed Bronze



**OUTDOOR HANGING  
LANTERN**

P550117-192  
Shelter White

## Hook Pond

Evoking thoughts of Jeffrey's East Coast summer home, the Hook Pond Collection features a steeply pitched, barn-inspired roof crowned with a distinctive loop finial. A clean, modern frame holds glass panels printed with a unique silver mesh pattern reminiscent of a traditional screened-in porch. Light is comfortably diffused from the white opal glass orb held within the generously scaled frame. The versatile collection is constructed of engineered composite polymers. Hook Pond wall lanterns are made with DURASHIELD, a durable material specially designed and tested to resist harsh environmental conditions.





**SMALL WALL LANTERN**

P560305-108  
Oil Rubbed Bronze



**SMALL WALL LANTERN**

P560305-141  
Galvanized



**SMALL WALL LANTERN**

P560305-192  
Shelter White



**LARGE WALL LANTERN**

P560306-108  
Oil Rubbed Bronze



**LARGE WALL LANTERN**

P560306-141  
Galvanized



**LARGE WALL LANTERN**

P560306-192  
Shelter White



## Dunemere

Homes from coast to coast will appreciate how the Dunemere Wall Lantern embodies Jeffrey's love of casual, relaxed outdoor living. Vintage barn details of symmetrical gables and a slanted corrugated roof form a peaked canopy over modern ribbed lamp holders and clear glass panels. Made with DURASHIELD, a durable material specially designed and tested to resist harsh environmental conditions.



**MEDIUM WALL  
LANTERN**

P560303-141  
Galvanized



**MEDIUM WALL  
LANTERN**

P560303-192  
Shelter White



**MEDIUM WALL  
LANTERN**

P560303-31M  
Matte Black





**SMALL WALL LANTERN**

P560302-141  
Galvanized



**SMALL WALL LANTERN**

P560302-192  
Shelter White



**SMALL WALL LANTERN**

P560302-31M  
Matte Black



**LARGE WALL LANTERN**

P560304-141  
Galvanized



**LARGE WALL LANTERN**

P560304-192  
Shelter White



**LARGE WALL LANTERN**

P560304-31M  
Matte Black



**SMALL WALL LANTERN**

P560300-141-27  
Galvanized



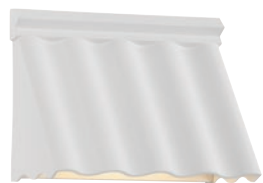
**MEDIUM WALL LANTERN**

P560299-141-27  
Galvanized



**SMALL WALL LANTERN**

P560300-192-27  
Shelter White



**MEDIUM WALL LANTERN**

P560299-192-27  
Shelter White



**SMALL WALL LANTERN**

P560300-31M-27  
Matte Black



**MEDIUM WALL LANTERN**

P560299-31M-27  
Matte Black

## Wakecrest LED

The Wakecrest LED Wall Sconce is a contemporary take on rustic luxury. Jeffrey translated the corrugated rooflines of classic barns into a softly waved sconce frame, paying homage to the Americana aesthetic. A crisp, sharp edge defines the modern roof peak and complements the vintage character of the fixture's design. Made with DURASHIELD, a durable material specially designed and tested to resist harsh environmental conditions.



“This collection of exterior lighting represents the true meaning of home – inviting spaces filled with warmth, comfort and beauty. Through these designs, I strive to capture the magic that is East Hampton, New York, a spot that is very sentimental to me and my family. The unobstructed landscape dominates, with beautiful green pastures surrounding tranquil ponds on the ocean’s edge.”

JEFFREY ALAN MARKS



This outdoor lighting extension of the Point Dume™ Collection expresses the relaxed attitude of shingled homes on the East Coast shoreline married with the elegant style of Hampton estates. Jeffrey turns to a familiar mix of finishes, such as galvanized and aged metals alongside a new palette

of crisp white and artistic glass, evoking a bygone era of craftsmanship and glamour that epitomizes Hampton retreats. These designs blur the lines between indoor and outdoor living, creating a welcoming and luxurious atmosphere for homes from coast to coast.



Featuring Point Dume™ Hook Pond







**CHANDELIER**

P400192-160  
Brushed Brass

**Wandermere**

With elegant out-stretched arms and the grace of a Calder mobile, the Wandermere chandelier is “modern symmetry in balance.” Available in Brushed Brass with curved metal shades, the Wandermere is an architectural presence for any space.



## Surfrider

Rows of lapping wave-like metal are combined with beautifully braided cords, and suspension hooks for an ageless “industrial meets the modern minded” point of view. The inspired Surfrider pendant is offered in a Galvanized finish and a refreshing “Maliblu” finish. To round out the versatile group, the Surfrider collection also includes complementary sconces available in Galvanized, Antique Bronze or White.



### LARGE PENDANT

P500200-162  
Maliblu



### LARGE PENDANT

P500200-141  
Galvanized



Photo by Lisa Romerein



Photo by Lisa Romerein



**PENDANT**

P500199-141  
Galvanized



**WALL SCONCE**

P710064-030  
White



**PENDANT**

P500199-162  
Malibue



**WALL SCONCE**

P710064-020  
Antique Bronze



**WALL SCONCE**

P710064-141  
Galvanized



Featuring Point Dume™ Surfrider pendants / Photo by Lisa Romerein.



**PENDANT**  
P500194-160  
Brushed Brass



**PENDANT**  
P500194-009  
Brushed Nickel



**WALL BRACKET**  
P710070-160  
Brushed Brass

## Onshore

Continuing Jeffrey's modern take on light and movement, the Onshore series combines some of his favorite materials and finishes. Offered as a White and Brushed Brass pendant, or a "Maliblu" and Brushed Nickel option, the Onshore group is a fresh and uplifting choice for casual living. The Onshore swing arm wall sconce in Brushed Brass has a three-tiered white enamel shade that complements this lifestyle.





## Sandbar

Ageless Brushed Brass is layered in modern tiers for the Sandbar ceiling fixture, sconce and pendant light. The addition of Jeffrey's tailormade leather details, brass hooks, milk glass and cables make for memorable, luxury lighting with infinite design applications.



### SEMI-FLUSH CONVERTIBLE

P350141-160  
Brushed Brass



### PENDANT

P500198-160  
Brushed Brass



### SEMI-FLUSH CONVERTIBLE

P350141-160  
Brushed Brass



### WALL SCONCE

P710068-160  
Brushed Brass






**WALL BRACKET**

P710069-009  
Brushed Nickel

## Lookout

The Lookout wall sconce is a modern classic that combines Brushed Nickel, clear seeded glass and handsome leather accents. Perfectly at home in so many locations and lifestyles, the Lookout sconce is ideal to use when multiples are a must. The Lookout wall sconce has the enduring sensibility that adds an uncomplicated elegance to any interior.





“For me the true meaning of home is being surrounded  
with natural physical beauty and well-crafted objects that  
feel both polished and personal.”

JEFFREY ALAN MARKS





**LARGE PENDANT**

P500197-134  
Silver Ridge

## Yerba

The Yerba group marries a modernized Moroccan shape with Mid Century geometric detail. Crafted of pierced metal in a Silver Ridge finish, the Yerba collection offers an inverted pendant, a dome shaped pendant, ceiling mounted fixture and wall sconce, each casting dramatic dappled light throughout a space.



*Photo by Lisa Romerein*



Photo by Lisa Romerein



**LARGE PENDANT**

P500197-134  
Silver Ridge



**PENDANT**

P500201-134  
Silver Ridge



**WALL SCONCE**

P710067-134  
Silver Ridge



**SEMI-FLUSH**

P350140-134  
Silver Ridge

## Shearwater

The Shearwater hanging lanterns and wall sconces embody Jeffrey's love of easy coastal living. His lighter lantern and sconce option combine Antique Nickel with clear glass and a soft-beige stitched leather handle, while the more traditional version of Shearwater combines Aged Brass, clear glass, and a handsome brown stitched leather handle. For a more California look, Jeffrey offers a white lantern with clear glass and his signature Maliblu accent as a pop of color in the roof of the fixture.



**WALL SCONCE**

P710066-161  
Aged Brass



**WALL SCONCE**

P710066-081  
Antique Nickel



Photo by Lisa Romerein



**LARGE PENDANT**

P500196-030  
White



**LARGE PENDANT**

P500196-161  
Aged Brass



**LARGE PENDANT**

P500196-081  
Antique Nickel



**PENDANT**  
P500195-009  
Brushed Nickel



**PENDANT**  
P500195-161  
Aged Brass

## Rockdance

The Rockdance Lighting series is a graceful series fashioned from unique glass, hook elements, and handsome stitched leather strapping. With the signatures of a bespoke handbag or boot, the surprising design elements that punctuate this exciting group are certain to become design favorites for generations. Available in Brushed Nickel or Antique Nickel with clear seeded glass or Aged Brass with mercury glass.



Photo by Lisa Romerein



**PENDANT**  
P500202-081  
Antique Nickel



**PENDANT**  
P500202-161  
Aged Brass



**SEMI-FLUSH**  
P350143-081  
Antique Nickel



**SEMI-FLUSH**  
P350143-161  
Aged Brass



**PENDANT**  
P500204-081  
Antique Nickel

## Moonrise

Quintessential JAM, Moonrise is an ethereal globe fashioned of Antique Nickel and marbled white glass. With a nod to its vintage ancestry, this simple style statement manages to defy time and live quite happily in the present. Jeffrey recommends the simplicity of Moonrise's round silhouette the perfect choice when the design calls for multiples.



**SEMI-FLUSH  
CONVERTIBLE**  
P350139-009  
Brushed Nickel



**SEMI-FLUSH  
CONVERTIBLE**  
P350139-161  
Aged Brass



**SEMI-FLUSH  
CONVERTIBLE**  
P350139-009  
Brushed Nickel



**SEMI-FLUSH  
CONVERTIBLE**  
P350139-161  
Aged Brass

## Tapia Trail

Jeffrey creates two distinctive looks when combining first Aged Brass and milk glass and then timeless Brushed Nickel and seeded glass. Both versions of the Tapia Trail fixture are defined by rivet details and remind us of their industrial origins — part Nautical, part Farmhouse, all American.



**PENDANT**  
P500203-160  
Brushed Brass

## Windbluff

With sophisticated effortlessness, the Windbluff pendant was inspired by breezy shoreline living and incorporates Brushed Brass and natural linen. This transitional pendant, perfect for both modern and traditional interiors, is suspended by decorative brass hooks and thoughtfully has a white diffuser to create that perfect glow.





## Sequit Point

The romance and architectural presence of a lighthouse is expressed in the Sequit Point group. In the same way strips of glass increased the effectiveness of lighthouse beacons, the modern Sequit Point series benefits from a similar ingenuity. Mercury glass sleeves stand in tandem with clear glass rods to provide a familiar glow for the convertible ceiling fixture/ pendant. Available in Antique Nickel and Brushed Brass.



**SEMI-FLUSH  
CONVERTIBLE**

P350142-081  
Antique Nickel



**SEMI-FLUSH  
CONVERTIBLE**

P350142-160  
Brushed Brass



**SEMI-FLUSH  
CONVERTIBLE**

P350142-081  
Antique Nickel



**SEMI-FLUSH  
CONVERTIBLE**

P350142-160  
Brushed Brass





Photo by Lisa Romerein



**WALL SCONCE**

P710065-020  
Antique Bronze



**WALL SCONCE**

P710065-009  
Brushed Nickel

## Latigo Bay

The timeless Latigo Bay wall sconce hugs the wall with a simple lined Mercury glass back and an articulated curved metal shade. Predicted to be a classic go-to for a variety of easy interior updates, this slim vertical sconce is available in Antique Bronze and Brushed Nickel.



OUTDOOR



**SHADMORE** Outdoor Hanging Lantern  
**P550118-31M** Matte Black with marbled acrylic shade  
 26" sq., 31-1/4" ht.  
 Overall ht. w/stem 97-1/2", wire 10'.  
 One medium base lamp,  
 100w max.



**SHADMORE** Outdoor Hanging Lantern  
**P550118-141** Galvanized with marbled acrylic shade  
 26" sq., 31-1/4" ht.  
 Overall ht. w/stem 97-1/2", wire 10'.  
 One medium base lamp,  
 100w max.



**EDGECLIFF** Outdoor Hanging Lantern  
**P550119-141** Galvanized with silver mesh patterned glass  
 33-1/8" W., 22-3/4 L., 14-1/2" ht.  
 Overall ht. w/stem 92", wire 10'.  
 Three medium base lamps,  
 100w max.



**EDGECLIFF** Outdoor Hanging Lantern  
**P550119-192** Shelter White with silver mesh patterned glass  
 33-1/8" W., 22-3/4 L., 14-1/2" ht.  
 Overall ht. w/stem 92", wire 10'.  
 Three medium base lamps,  
 100w max.



**EDGECLIFF** Outdoor Hanging Lantern  
**P550119-108** Oil Rubbed Bronze with silver mesh patterned glass  
 33-1/8" W., 22-3/4 L., 14-1/2" ht.  
 Overall ht. w/stem 92", wire 10'.  
 Three medium base lamps,  
 100w max.



**SEAMOR** Wall Lantern  
**P560297-108** Oil Rubbed Bronze  
 11" W., 12-5/8" ht.  
 Extends 6". H/CTR 7-1/2".  
 Two candelabra base lamps,  
 60w max.



**SEAMOR** Wall Lantern  
**P560297-141** Galvanized  
 11" W., 12-5/8" ht.  
 Extends 6". H/CTR 7-1/2".  
 Two candelabra base lamps,  
 60w max.

OUTDOOR



**HOOK POND** Outdoor Hanging Lantern  
**P550117-108** Oil Rubbed Bronze with silver mesh patterned glass  
 16-1/8" sq., 26-7/8" ht.  
 Overall ht. w/stem 101", wire 15'.  
 One medium base lamp,  
 60w max.



**HOOK POND** Outdoor Hanging Lantern  
**P550117-141** Galvanized with silver mesh patterned glass  
 16-1/8" sq., 26-7/8" ht.  
 Overall ht. w/stem 101", wire 15'.  
 One medium base lamp,  
 60w max.



**HOOK POND** Outdoor Hanging Lantern  
**P550117-192** Shelter White with silver mesh patterned glass  
 16-1/8" sq., 26-7/8" ht.  
 Overall ht. w/stem 101", wire 15'.  
 One medium base lamp,  
 60w max.



**HOOK POND** Small Wall Lantern  
**P560305-108** Oil Rubbed Bronze with silver mesh patterned glass  
 6-1/4" W., 16-1/2" ht.  
 Extends 5-1/4". H/CTR 11".  
 One medium base lamp,  
 60w max.



**HOOK POND** Small Wall Lantern  
**P560305-141** Galvanized with silver mesh patterned glass  
 6-1/4" W., 16-1/2" ht.  
 Extends 5-1/4". H/CTR 11".  
 One medium base lamp,  
 60w max.



**HOOK POND** Small Wall Lantern  
**P560305-192** Shelter White with silver mesh patterned glass  
 6-1/4" W., 16-1/2" ht.  
 Extends 5-1/4". H/CTR 11".  
 One medium base lamp,  
 60w max.



**HOOK POND** Large Wall Lantern  
**P560306-108** Oil Rubbed Bronze with silver mesh patterned glass  
 8-1/2" W., 22-3/8" ht.  
 Extends 7-1/8". H/CTR 15-1/8".  
 One medium base lamp,  
 60w max.



**HOOK POND** Large Wall Lantern  
**P560306-141** Galvanized with silver mesh patterned glass  
 8-1/2" W., 22-3/8" ht.  
 Extends 7-1/8". H/CTR 15-1/8".  
 One medium base lamp,  
 60w max.



**HOOK POND** Large Wall Lantern  
**P560306-192** Shelter White with silver mesh patterned glass  
 8-1/2" W., 22-3/8" ht.  
 Extends 7-1/8". H/CTR 15-1/8".  
 One medium base lamp,  
 60w max.

OUTDOOR



**DUNEMERE** Small Wall Lantern  
P560302-141 Galvanized  
6-5/8" W., 10-1/2" ht.  
Extends 5-7/8". H/CTR 7-5/8".  
One medium base lamp,  
60w max.



**DUNEMERE** Small Wall Lantern  
P560302-192 Shelter White  
6-5/8" W., 10-1/2" ht.  
Extends 5-7/8". H/CTR 7-5/8".  
One medium base lamp,  
60w max.



**DUNEMERE** Small Wall Lantern  
P560302-31M Matte Black  
6-5/8" W., 10-1/2" ht.  
Extends 5-7/8". H/CTR 7-5/8".  
One medium base lamp,  
60w max.



**DUNEMERE** Medium Wall Lantern  
P560303-141 Galvanized  
6-5/8" W., 14" ht.  
Extends 5-7/8". H/CTR 9-1/4".  
One medium base lamp,  
60w max.



**DUNEMERE** Medium Wall Lantern  
P560303-192 Shelter White  
6-5/8" W., 14" ht.  
Extends 5-7/8". H/CTR 9-1/4".  
One medium base lamp,  
60w max.



**DUNEMERE** Medium Wall Lantern  
P560303-31M Matte Black  
6-5/8" W., 14" ht.  
Extends 5-7/8". H/CTR 9-1/4".  
One medium base lamp,  
60w max.



**DUNEMERE** Large Wall Lantern  
P560304-141 Galvanized  
8" W., 16" ht.  
Extends 7-1/8". H/CTR 10-1/8".  
One medium base lamp,  
60w max.



**DUNEMERE** Large Wall Lantern  
P560304-192 Shelter White  
8" W., 16" ht.  
Extends 7-1/8". H/CTR 10-1/8".  
One medium base lamp,  
60w max.



**DUNEMERE** Large Wall Lantern  
P560304-31M Matte Black  
8" W., 16" ht.  
Extends 7-1/8". H/CTR 10-1/8".  
One medium base lamp,  
60w max.

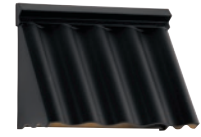
OUTDOOR



**WAKECREST LED** Medium Wall Lantern  
P560299-141-27 Galvanized  
9" W., 6-5/8" ht.  
Extends 3-7/8". H/CTR 4-1/2".  
8w integrated LED, 2700K,  
90 CRI, 388 delivered lumens.  
T24 for outdoor application only.  
ADA. Dark Sky friendly.



**WAKECREST LED** Medium Wall Lantern  
P560299-192-27 Shelter White  
9" W., 6-5/8" ht.  
Extends 3-7/8". H/CTR 4-1/2".  
8w integrated LED, 2700K,  
90 CRI, 464 delivered lumens.  
T24 for outdoor application only.  
ADA. Dark Sky friendly.



**WAKECREST LED** Medium Wall Lantern  
P560299-31M-27 Matte Black  
9" W., 6-5/8" ht.  
Extends 3-7/8". H/CTR 4-1/2".  
8w integrated LED, 2700K,  
90 CRI, 298 delivered lumens.  
T24 for outdoor application only.  
ADA. Dark Sky friendly.



**WAKECREST LED** Small Wall Lantern  
P560300-141-27 Galvanized  
6-1/2" W., 6-5/8" ht.  
Extends 3-7/8". H/CTR 3-3/4".  
6w integrated LED, 2700K,  
90 CRI, 248 delivered lumens.  
T24 for outdoor application only.  
ADA. Dark Sky friendly.



**WAKECREST LED** Small Wall Lantern  
P560300-192-27 Shelter White  
6-1/2" W., 6-5/8" ht.  
Extends 3-7/8". H/CTR 3-3/4".  
6w integrated LED, 2700K,  
90 CRI, 281 delivered lumens.  
T24 for outdoor application only.  
ADA. Dark Sky friendly.



**WAKECREST LED** Small Wall Lantern  
P560300-31M-27 Matte Black  
6-1/2" W., 6-5/8" ht.  
Extends 3-7/8". H/CTR 3-3/4".  
6w integrated LED, 2700K,  
90 CRI, 217 delivered lumens.  
T24 for outdoor application only.  
ADA. Dark Sky friendly.

CHANDELIERS AND PENDANTS



**WANDERMERE** Chandelier  
P400192-160 Brushed Brass with white  
40" dia., 28-1/4" ht.  
Overall ht. w/chain 103-1/2", wire 15'.  
Eight candelabra base lamps, each 60w max.



**SURFRIDER** Large Pendant  
P500200-162 Maliblu with white  
24-7/8" dia., 17-1/2" ht.  
Overall ht. w/chain 103-1/2", wire 15'.  
Three medium base lamps, each 75w max.



**SURFRIDER** Large Pendant  
P500200-141 Galvanized with white  
24-7/8" dia., 17-1/2" ht.  
Overall ht. w/chain 103-1/2", wire 15'.  
Three medium base lamps, each 75w max.

PENDANTS



**SHEARWATER** Large Pendant  
P500196-161 Aged Brass and brown leather  
16-1/4" dia., 32" ht.  
Overall ht. w/chain 109", wire 15'.  
Four candelabra base lamps, each 60w max.



**SHEARWATER** Large Pendant  
P500196-081 Antique Nickel with Maliblu and beige leather  
16-1/4" dia., 32" ht.  
Overall ht. w/chain 109", wire 15'.  
Four candelabra base lamps, each 60w max.



**SHEARWATER** Large Pendant  
P500196-030 White with Maliblu and brown leather  
16-1/4" dia., 32" ht.  
Overall ht. w/chain 109", wire 15'.  
Four candelabra base lamps, each 60w max.



**SANDBAR** Pendant  
P500198-160 Brushed Brass with milk glass and beige leather  
21-1/4" dia., 14-7/8" ht.  
Overall ht. w/chain 93-1/2", wire 15'.  
Three medium base lamps, each 100w max.



**SURFRIDER** Pendant  
P500199-162 Maliblu with white  
13-7/8" dia., 12-3/8" ht.  
Overall ht. w/chain 96-1/2", wire 15'.  
One medium base lamp, 75w max.



**SURFRIDER** Pendant  
P500199-141 Galvanized with white  
13-7/8" dia., 12-3/8" ht.  
Overall ht. w/chain 96-1/2", wire 15'.  
One medium base lamp, 75w max.



**YERBA** Large Pendant  
P500197-134 Silver Ridge  
21-5/8" dia., 24" ht.  
Overall ht. w/stem 90", wire 15'.  
Four medium base lamps, each 60w max.



**YERBA** Pendant  
P500201-134 Silver Ridge  
12" dia., 8-1/4" ht.  
Overall ht. w/stem 74-1/2", wire 10'.  
One medium base lamp, 100w max.



**TAPIA TRAIL** Semi-Flush Convertible  
P350139-009 Brushed Nickel with seeded glass  
Hanging and ceiling mount hardware included.  
11-3/4" dia., 12-7/8" ht.  
Overall ht. w/stem 77-1/2", wire 12'.  
One medium base lamp, 100w max.



**SANDBAR** Semi-Flush Convertible  
P350141-160 Brushed Brass with milk glass  
Hanging and ceiling mount hardware included.  
15 1/8" dia., 14 7/8" ht.  
Overall ht. w/stem 76", wire 10'.  
Three medium base lamps, each 100w max.



**ONSHORE** Pendant  
P500194-009 Brushed Nickel with white and Maliblu  
8" dia., 13" ht.  
Overall ht. w/stem 79", wire 10'.  
One medium base lamp, 100w max.



**ONSHORE** Pendant  
P500194-160 Brushed Brass with white  
8" dia., 13" ht.  
Overall ht. w/stem 79", wire 10'.  
One medium base lamp, 100w max.



**WINDBLUFF** Pendant  
P500203-160 Brushed Brass with linen shade  
20" dia., 16-1/2" ht.  
Overall ht. w/chain 91-1/2", wire 15'.  
Three medium base lamps, each 100w max.



**MOONRISE** Pendant  
P500204-081 Antique Nickel with marble glass  
18-1/2" dia., 19-1/4" ht.  
Overall ht. w/chain 94", wire 15'.  
Three medium base lamps, each 100w max.



**TAPIA TRAIL** Semi-Flush Convertible  
P350139-161 Aged Brass with milk glass  
Hanging and ceiling mount hardware included.  
11-3/4" dia., 12-7/8" ht.  
Overall ht. w/stem 77-1/2", wire 12'.  
One medium base lamp, 100w max.

PENDANTS



**ROCKDANCE** Pendant  
**P500202-081** Antique Nickel with beige leather and seeded glass  
 9-1/2" dia., 17-1/2" ht.  
 Overall ht. w/chain 92-1/2", wire 10'.  
 One medium base lamp, 100w max.



**ROCKDANCE** Pendant  
**P500195-009** Brushed Nickel with seeded glass and beige leather  
 15-3/4" dia., 10-1/8" ht.  
 Overall ht. w/chain 85-1/2", wire 10'.  
 One medium base lamp, 100w max.



**ROCKDANCE** Pendant  
**P500195-161** Aged Brass with mercury glass and brown leather  
 15-3/4" dia., 10-1/8" ht.  
 Overall ht. w/chain 85-1/2", wire 10'.  
 One medium base lamp, 100w max.



**ROCKDANCE** Pendant  
**P500202-161** Aged Brass with brown leather and mercury glass  
 9-1/2" dia., 17-1/2" ht.  
 Overall ht. w/chain 92-1/2", wire 10'.  
 One medium base lamp, 100w max.



**SEQUIT POINT** Semi-Flush Convertible  
**P350142-160** Brushed Brass with mercury glass  
 Hanging and ceiling mount hardware included.  
 14" dia., 9-5/8" ht.  
 Overall ht. w/stem 78", wire 10'.  
 Three candelabra base lamps, each 60w max.



**SEQUIT POINT** Semi-Flush Convertible  
**P350142-081** Antique Nickel with mercury glass  
 Hanging and ceiling mount hardware included.  
 14" dia., 9-5/8" ht.  
 Overall ht. w/stem 78", wire 10'.  
 Three candelabra base lamps, each 60w max.

CLOSE TO CEILING



**YERBA** Close to Ceiling  
**P350140-134** Silver Ridge  
 17-3/8" dia., 12-3/8" ht.  
 Three candelabra base lamps, each 60w max.



**ROCKDANCE** Close to Ceiling  
**P350143-081** Antique Nickel with seeded glass with beige leather  
 14-3/8" dia., 10-1/4" ht.  
 Four candelabra base lamps, each 60w max.



**ROCKDANCE** Close to Ceiling  
**P350143-161** Aged Brass with mercury glass and brown leather  
 14-3/8" dia., 10-1/4" ht.  
 Four candelabra base lamps, each 60w max.



**SEQUIT POINT** Semi-Flush Convertible  
**P350142-160** Brushed Brass with mercury glass  
 Hanging and ceiling mount hardware included.  
 14" dia., 9-5/8" ht.  
 Overall ht. w/stem 78", wire 10'.  
 Three candelabra base lamps, each 60w max.



**SEQUIT POINT** Semi-Flush Convertible  
**P350142-081** Antique Nickel with mercury glass  
 Hanging and ceiling mount hardware included.  
 14" dia., 9-5/8" ht.  
 Overall ht. w/stem 78", wire 10'.  
 Three candelabra base lamps, each 60w max.



**SANDBAR** Semi-Flush Convertible  
**P350141-160** Brushed Brass with milk glass  
 Hanging and ceiling mount hardware included.  
 15-1/8" dia., 14-7/8" ht.  
 Overall ht. w/stem 76", wire 10'.  
 Three medium base lamps, each 100w max.



**TAPIA TRAIL** Semi-Flush Convertible  
**P350139-161** Aged Brass with milk glass  
 Hanging and ceiling mount hardware included.  
 11-3/4" dia., 12-7/8" ht.  
 Overall ht. w/stem 77-1/2", wire 12'.  
 One medium base lamp, 100w max.



**TAPIA TRAIL** Semi-Flush Convertible  
**P350139-009** Brushed Nickel with seeded glass  
 Hanging and ceiling mount hardware included.  
 11-3/4" dia., 12-7/8" ht.  
 Overall ht. w/stem 77-1/2", wire 12'.  
 One medium base lamp, 100w max.

WALL BRACKETS AND SCONCES



**ONSHORE** Wall Bracket  
**P710070-160** Brushed Brass  
 with white  
 8-7/8" dia., 8-3/8" ht.  
 Extends 22-1/2". H/CTR 4".  
 One medium base lamp,  
 60w max.



**SANDBAR** Wall Sconce  
**P710068-160** Brushed Brass with  
 milk glass  
 8-7/8" W., 12" ht.  
 Extends 4-1/2". H/CTR 6".  
 One candelabra base lamp,  
 60w max.



**LOOKOUT** Wall Sconce  
**P710069-009** Brushed Nickel  
 with brown leather  
 6" W., 12-7/8" ht.  
 Extends 7-3/8". H/CTR 7-3/4"  
 One medium base lamp,  
 60w max.



**LATIGO BAY** Wall Sconce  
**P710065-020** Antique Bronze with  
 mercury glass  
 7" W., 11" ht.  
 Extends 4". H/CTR 5-1/2".  
 One medium base lamp,  
 60w max.  
 ADA



**LATIGO BAY** Wall Sconce  
**P710065-009** Brushed Nickel with  
 mercury glass  
 7" W., 11" ht.  
 Extends 4". H/CTR 5-1/2".  
 One medium base lamp,  
 60w max.  
 ADA



**YERBA** Wall Sconce  
**P710067-134** Silver Ridge  
 8-1/4" W., 12-1/2" ht.  
 Extends 3-7/8". H/CTR 6-1/4".  
 One candelabra base lamp,  
 60w max.  
 ADA



**SHEARWATER** Wall Sconce  
**P710066-081** Antique Nickel  
 with beige leather  
 8" W., 15-7/8" ht.  
 Extends 3-7/8". H/CTR 7-7/8".  
 One candelabra base lamp,  
 60w max.  
 ADA



**SHEARWATER** Wall Sconce  
**P710066-161** Aged Brass  
 with brown leather  
 8" W., 15-7/8" ht.  
 Extends 3-7/8". H/CTR 7-7/8".  
 One candelabra base lamp,  
 60w max.  
 ADA

ACCESSORY



**ACCESSORY CHAIN**  
**P8755-31M** Matte Black



**ACCESSORY CHAIN**  
**P8755-108** Oil Rubbed Bronze



**ACCESSORY CHAIN**  
**P8755-141** Galvanized



**ACCESSORY CHAIN**  
**P8755-192** Shelter White



**SURFRIDER** Wall Sconce  
**P710064-141** Galvanized  
 9" W., 11-1/8" ht.  
 Extends 3-7/8". H/CTR 6".  
 Two candelabra base lamps,  
 each 60w max.  
 ADA



**SURFRIDER** Wall Sconce  
**P710064-020** Antique Bronze  
 9" W., 11-1/8" ht.  
 Extends 3-7/8". H/CTR 6".  
 Two candelabra base lamps,  
 each 60w max.  
 ADA



**SURFRIDER** Wall Sconce  
**P710064-030** White  
 9" W., 11-1/8" ht.  
 Extends 3-7/8". H/CTR 6".  
 Two candelabra base lamps,  
 each 60w max.  
 ADA



“Beautiful lighting can appeal to both one’s pragmatic nature and one’s artistic spirit. For me, there is no better reward than to create well-loved spaces where life can be enjoyed fully and lived beautifully.”

JEFFREY ALAN MARKS





